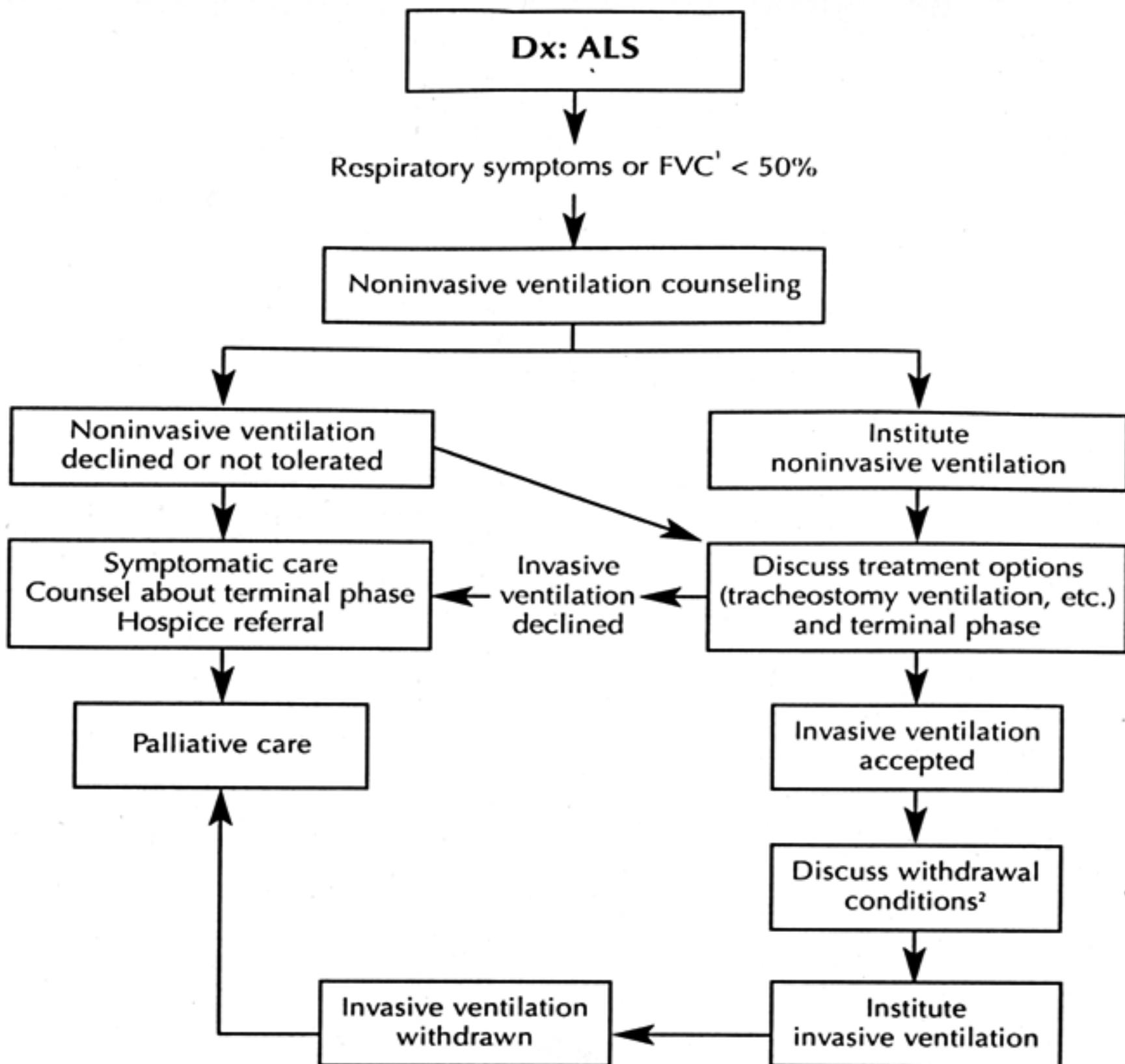


ALGORITHM FOR RESPIRATORY MANAGEMENT



¹Forced vital capacity (FVC) or vital capacity (VC) can be used. VC may be more accurate in patients with bulbar dysfunction

²Agreement needed for conditions of withdrawal prior to or concurrent with instituting invasive ventilation (e.g. locked in state, coma, etc.)

Dx = diagnosis